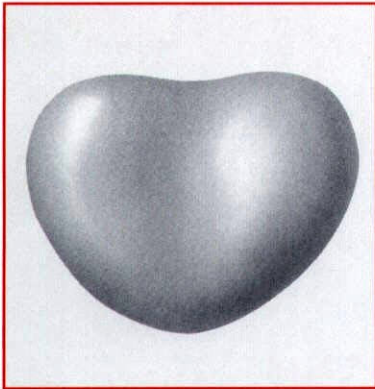
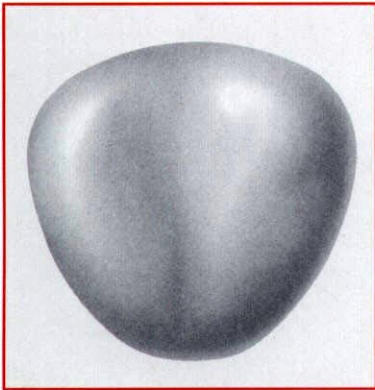


Rectal examination



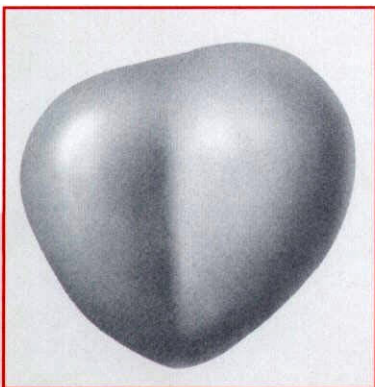
Normal prostate

This feels smooth and elastic.
It is about the size of a chestnut and weighs approx. 20 grams.
It has a rubbery consistency, as with the tip of the nose.



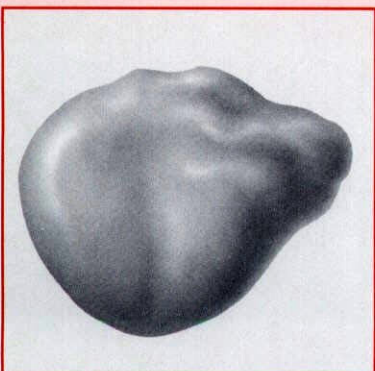
Large prostate (BPH)

This is about the size of a plum and weighs approx. 40-50 grams.
It still feels quite smooth and symmetrical.



Enlarged prostate (BPH)

This is about the size of a plum and weighs approx. 40-50 grams.
With some asymmetry due to the heterogeneous nature of underlying process.



Large prostate: suspicious nodule, possibly cancer

This may increase to the size of a satsuma, weighing 50 grams+.
If malignancy is present, a hard nodule may be palpable.